



FLAT 1 14-22 COLEMAN FIELDS LONDON

£1,850 PER

Gorgeous ground-level studio apartment available.

This large studio apartment features a spacious open-concept living area adorned with expansive windows and elegant wood flooring.

The Property boasts a separate, fully equipped kitchen, a contemporary bathroom, ample floor-to-ceiling built-in wardrobes, and an additional study or storage room.

Conveniently located near a variety of amenities including restaurants, cafes, and shopping options along the renowned Upper Street in Islington.

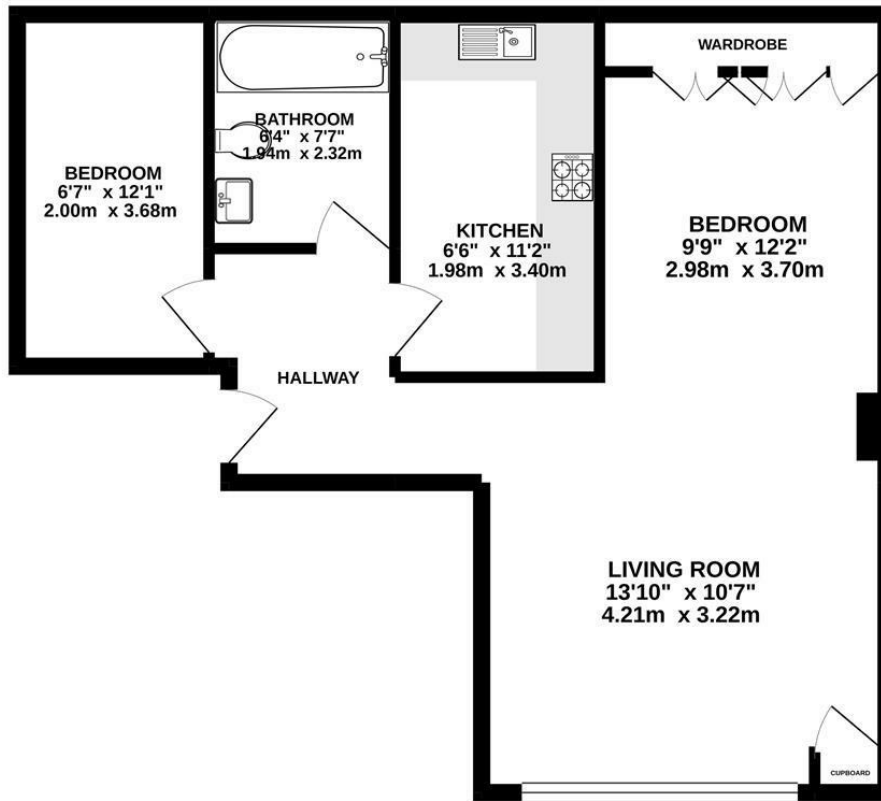


- Studio Apartment • Large Storage/Study Room • Unfurnished • Available Early May • Fantastic Location • Gated Development • Council Tax Band D (Islington) • EPC Rating C





GROUND FLOOR



TOTAL FLOOR AREA : 597sq.ft. (55.5 sq.m.) approx.

Whilst every attempt has been made to ensure the accuracy of the floorplan contained here, measurements of doors, windows, rooms and any other items are approximate and no responsibility is taken for any error, omission or mis-statement. This plan is for illustrative purposes only and should be used as such by any prospective purchaser. The services, systems and appliances shown have not been tested and no guarantee as to their operability or efficiency can be given.
Made with Metropix ©2021.



| Energy Efficiency Rating | | |
|---|-------------------------|-----------|
| | Current | Potential |
| Very energy efficient - lower running costs | | |
| (92+) | | |
| (81-91) | | |
| (69-80) | | |
| (55-68) | | |
| (39-54) | | |
| (21-38) | | |
| (1-20) | | |
| Not energy efficient - higher running costs | | |
| England & Wales | EU Directive 2002/91/EC | |

Agents Note: Whilst every care has been taken to prepare these particulars, they are for guidance purposes only. All measurements are approximate and are for general guidance purposes only and whilst every care has been taken to ensure their accuracy, they should not be relied upon and potential buyers/tenants are advised to recheck the measurements

Noble House Services - Lettings 02070888220
5 Paper Mill Buildings, City Garden Row, Islington London N1 8DW
enquiries@nh-services.co.uk
www.nh-services.co.uk

NH NobleHouse
services